

# Comprehensive Master Plan

---

**Parks, Recreation and Community Services  
Department**

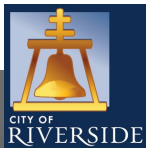
Park and Recreation Commission  
October 21, 2019

# COMPREHENSIVE PARK, RECREATION & COMMUNITY SERVICES

- **Guide and implementation tool** for the **management and development** of parks and recreation facilities and programs.
- Identifies **local** community needs
- Updates the general plan policy elements
- Offers **recommendations** to support the **Local Riverside Community**

“Alleviate parkland shortage, provide parks in underserved areas, and strive to preserve natural resources and open space in a cost-effective manner to enhance the living environment for all residents.”

- General Plan



# PROCESS





# EXISTING CONDITIONS

- 59 parks
- 2519 acres of developed parkland
- 12 community centers
- 3 senior centers
- 8 swimming pools (1 joint use)
- 23.7 miles of trails
- 94.5 miles of bike lanes

# COMMUNITY OUTREACH

- Stakeholder Interviews
- Focus Groups
- Community Workshop
- Sports Organization Questionnaire
- ESRI Online Survey
- Telephone Survey





# COMMUNITY OUTREACH STAKEHOLDER INTERVIEWS

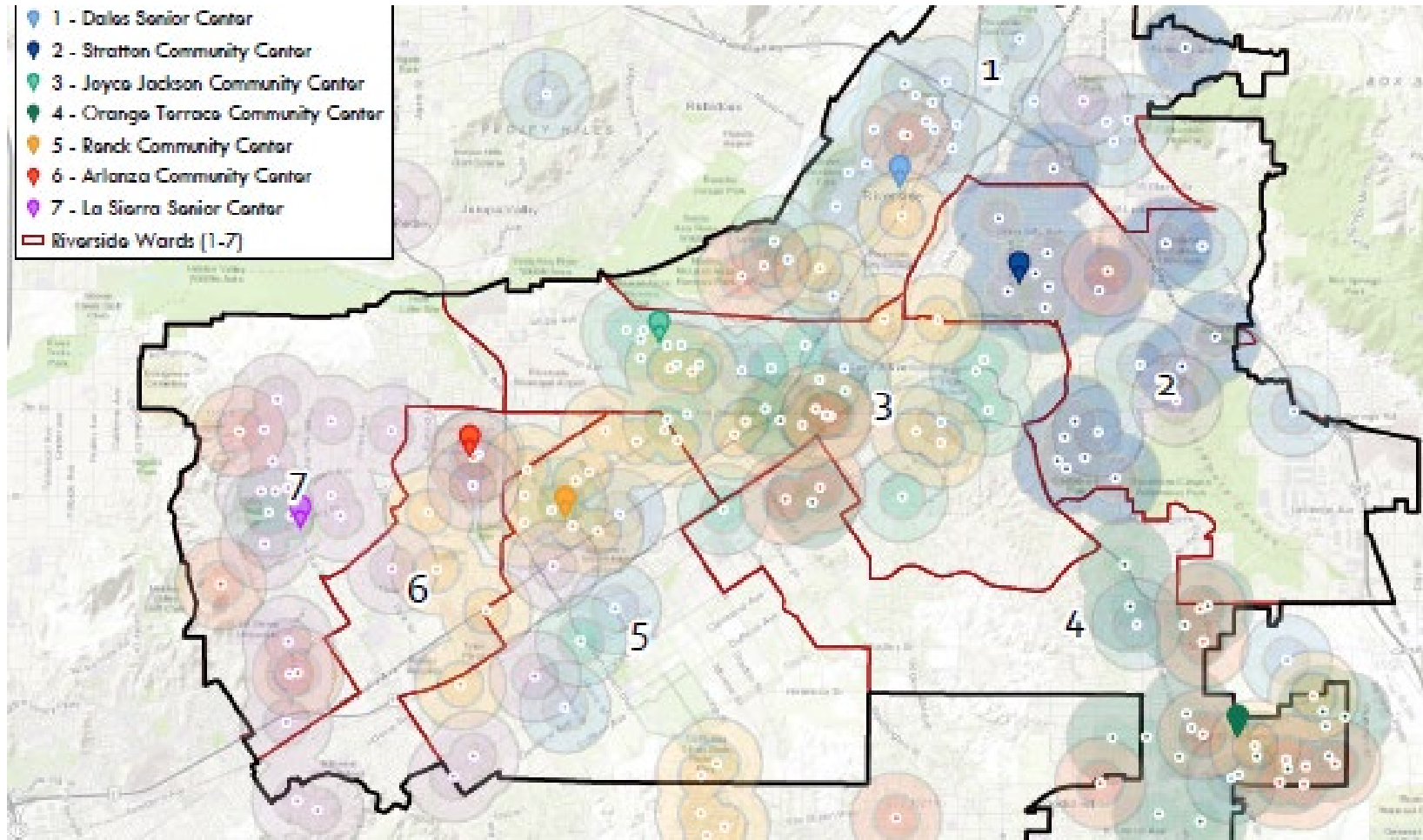
- 18 executive interviews
- adequate resources / infrastructure/ funding/ and addressing the rising deferred maintenance condition within the parks.
- Concerns about homelessness, outreach to disadvantages communities, and lack of facilities
- homelessness and afterschool programs are underserved the most; additionally, there is a need for more music, arts, and cultural based programming
- pool/ aquatic facility west of Arlington. Other mentions included sports facilities, trails, and a senior facility at Orange Crest.



# COMMUNITY OUTREACH FOCUS GROUPS

- 5 Focus Groups
- Facility Mentions: More shade structures, Improved trail facilities, Additional sports facilities /parking, Additional Community Centers, Homeless shelters
- Program Mentions: Sports training programs, Nature / outdoor educational programs, Transportation programs, Community outreach programs

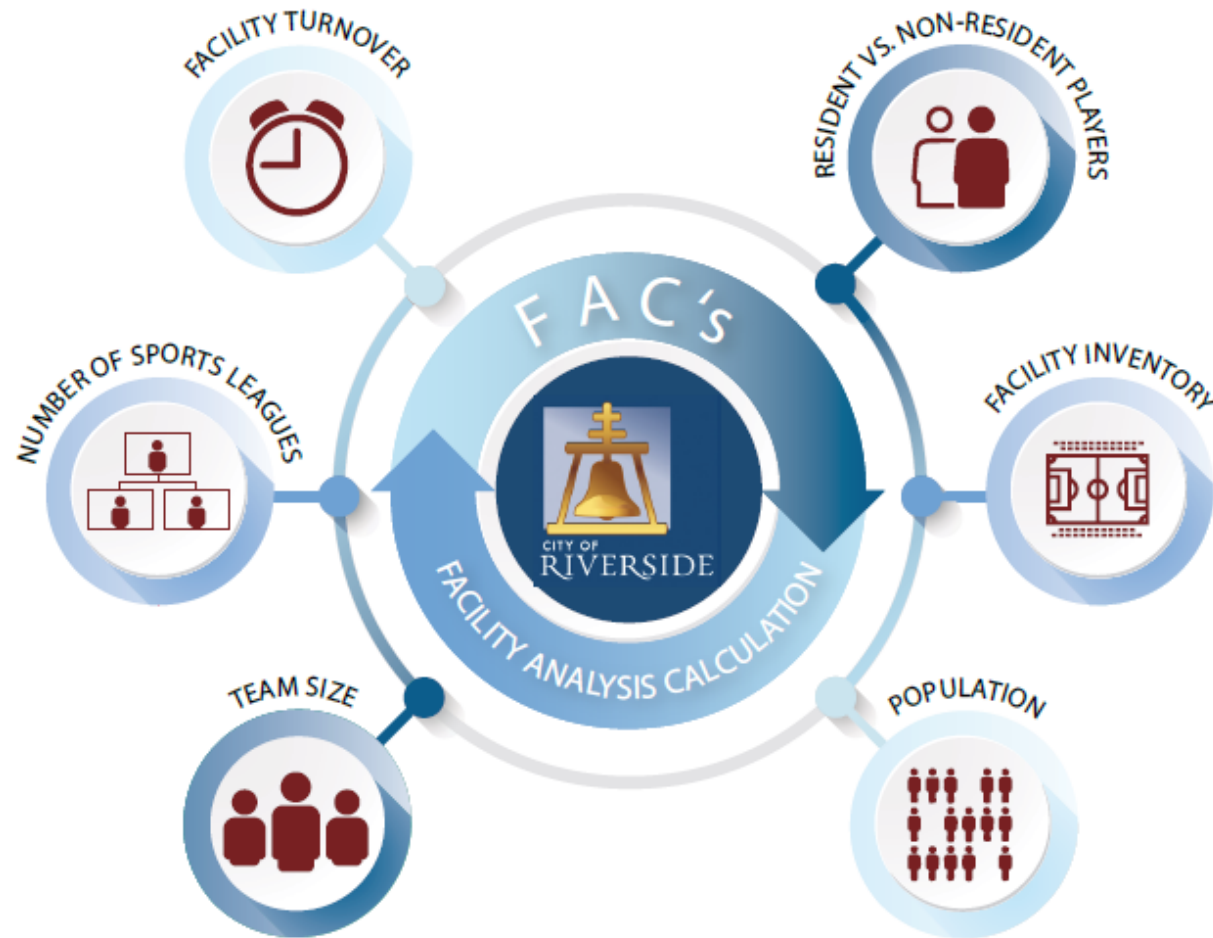
# COMMUNITY OUTREACH WORKSHOPS



- 7 Community Workshop (one in each ward)
- Issues: Homelessness, Safety / Crime, Traffic and Parking
- Facilities: Pools / Heated Pool Facilities, Restrooms, Trails, Shade, Modernizing Facilities
- Programs: Patrolling / Security / Ranger Program, Pool Activities, Nutritional Programs, Programs offered Online

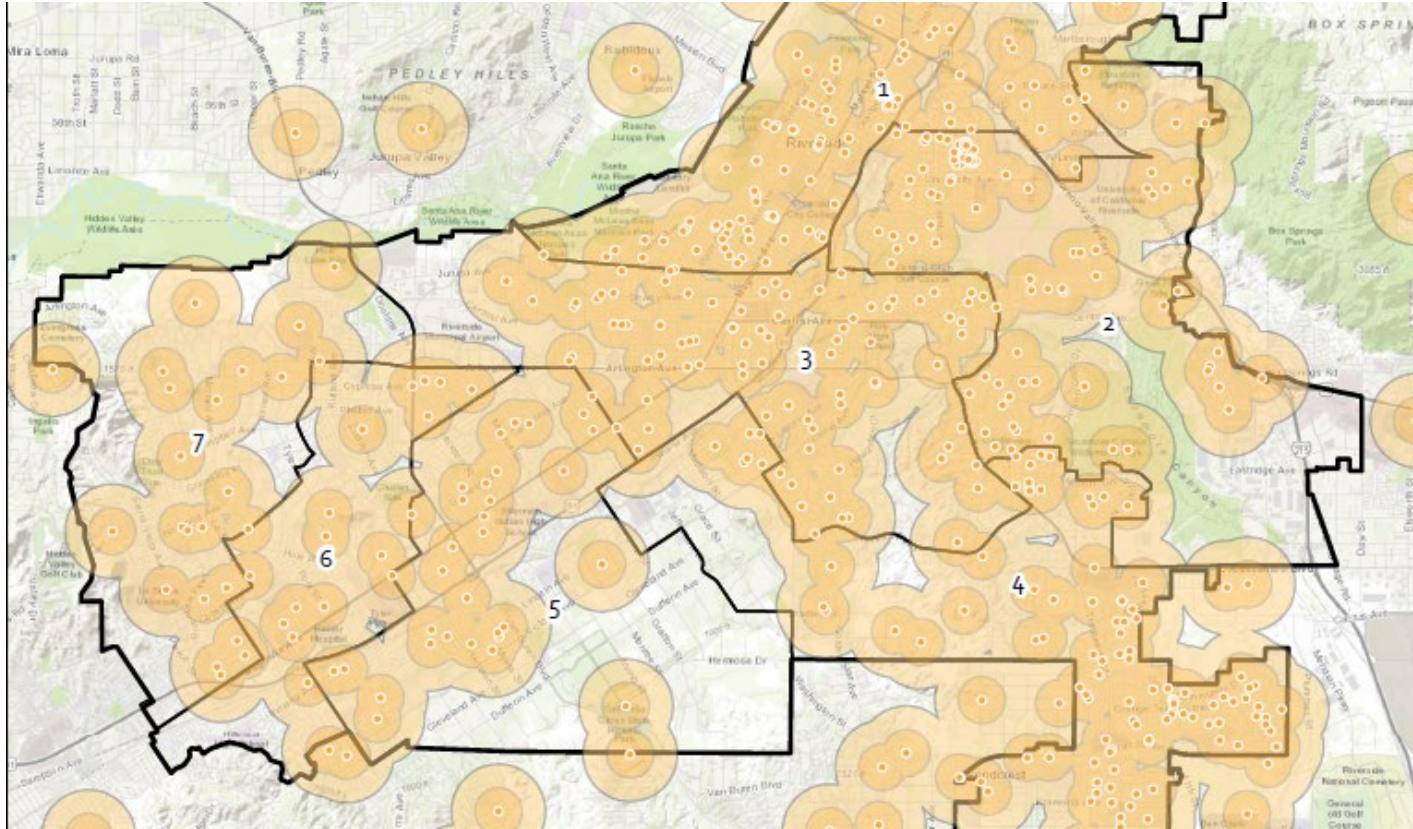


# COMMUNITY OUTREACH SPORTS ORGS.



- 48 Sports Organization Reviewed and Analyzed
  - Percentage of resident players
  - Size of teams
  - Number of players
  - Seasonality
  - Field Turnovers

# COMMUNITY OUTREACH ONLINE SURVEY



- 633 responses (571 identifying themselves as residents)
- Geolocated / Citywide distribution
- Questions on program and facility usage, satisfaction, and desires.

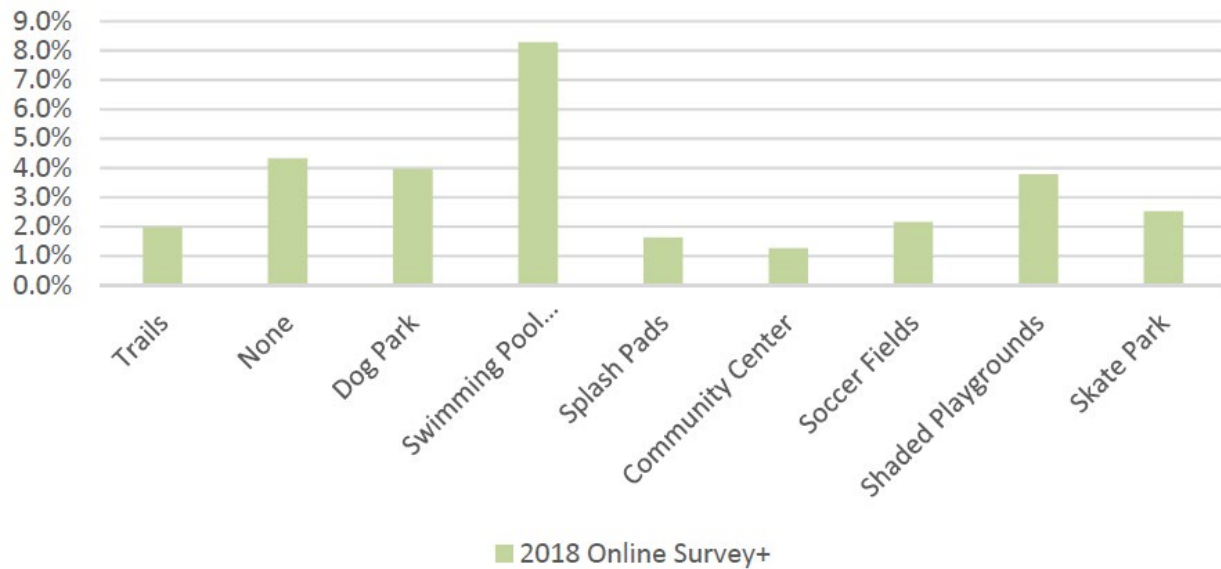


# COMMUNITY OUTREACH TELEPHONE SURVEY

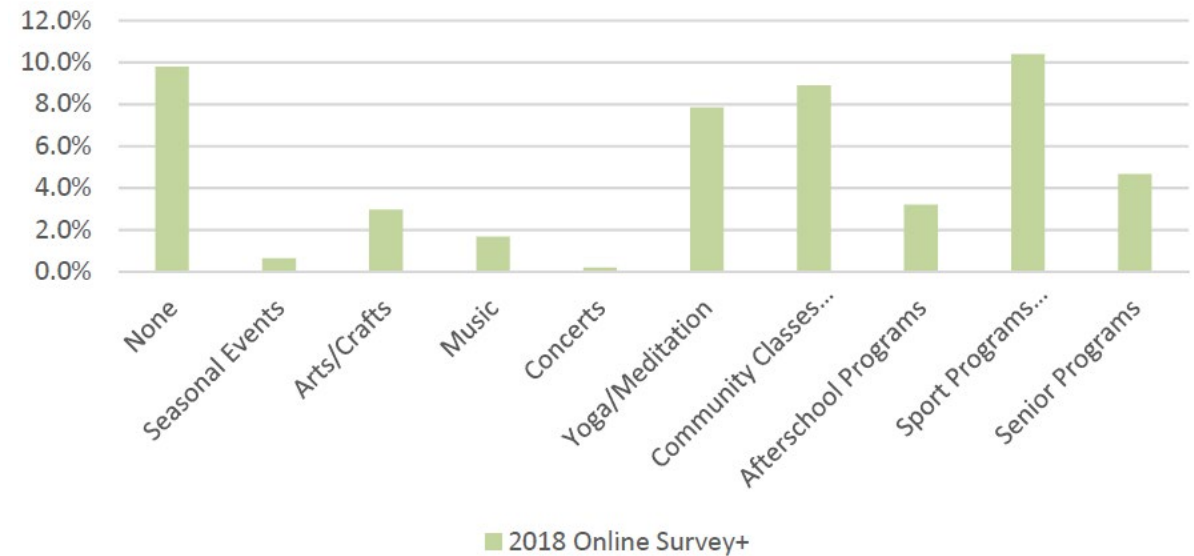
- 300 completed surveys representing over 900 residents
- Conducted in English and Spanish
- 2002 and 2018 data collected and reviewed

# COMMUNITY OUTREACH ONLINE SURVEY

## Recreation Facility Desired Most

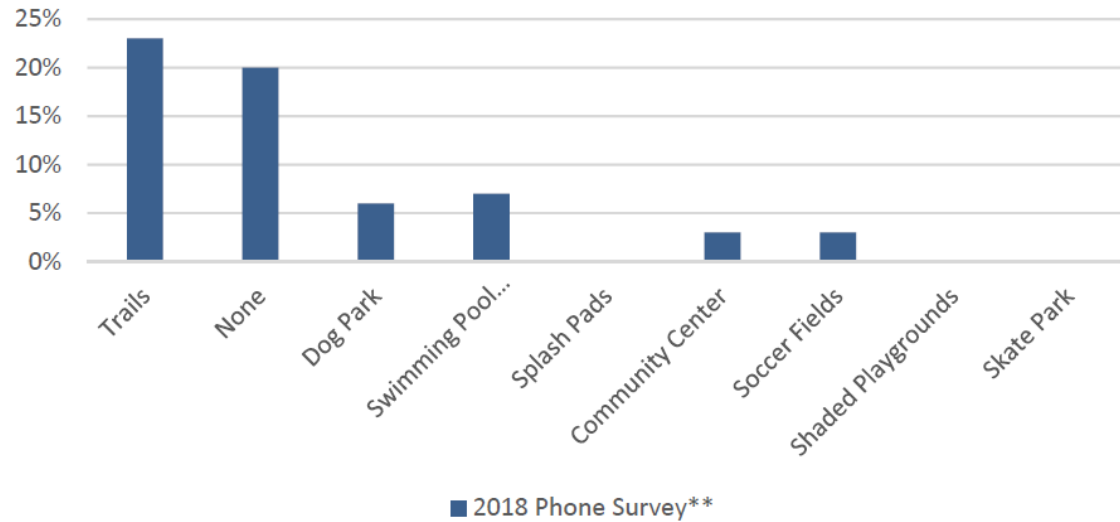


## Recreation Programs Desired Most

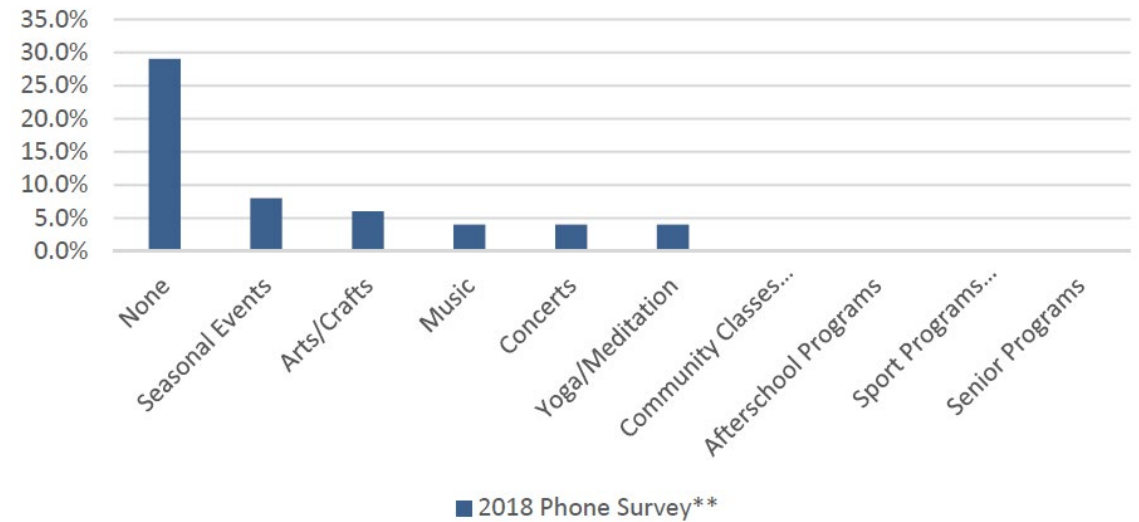


# COMMUNITY OUTREACH TELEPHONE SURVEY

## Recreation Facility Desired Most

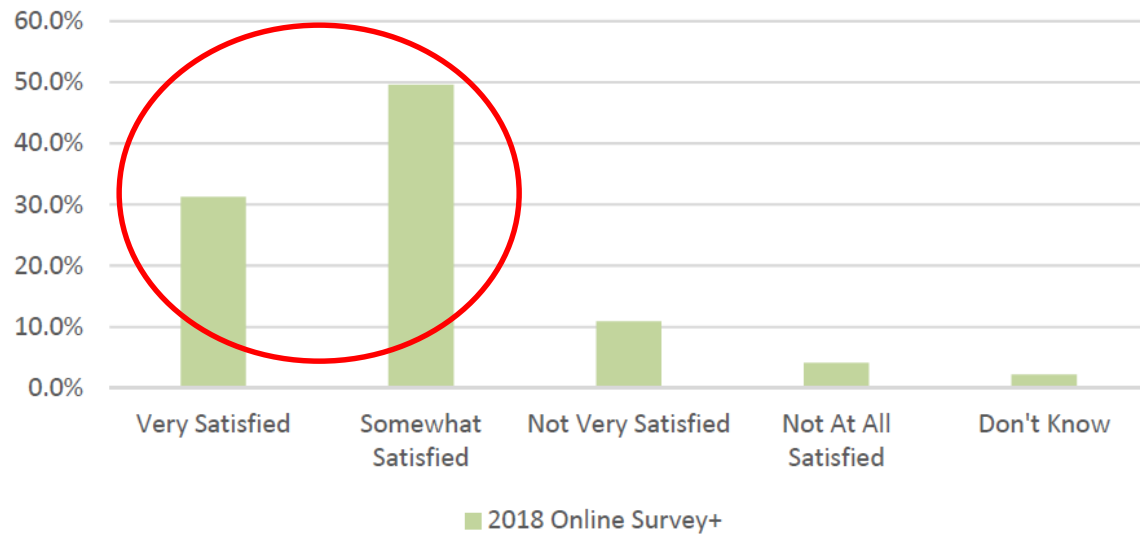


## Recreation Programs Desired Most

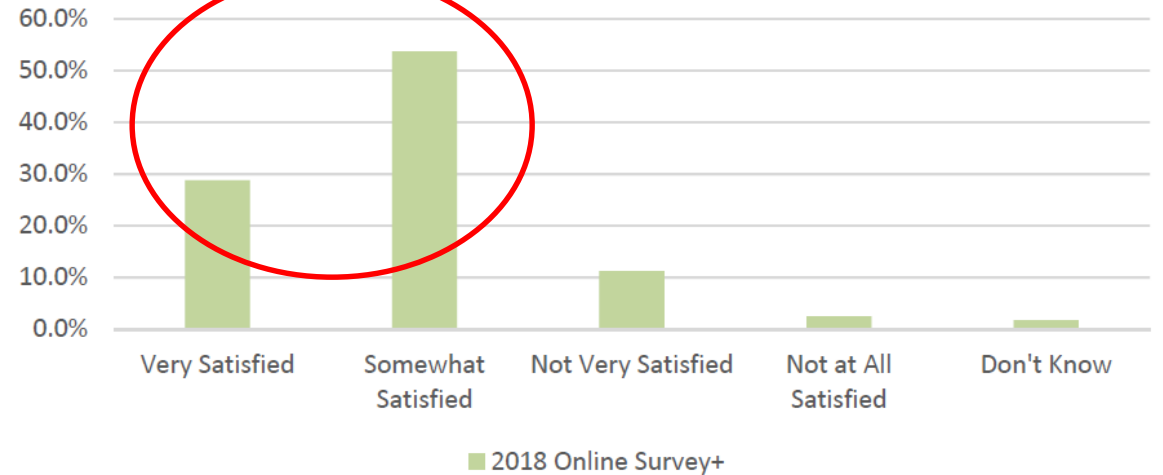


# COMMUNITY OUTREACH ONLINE SURVEY

### Rating Recreation Facilities Maintenance

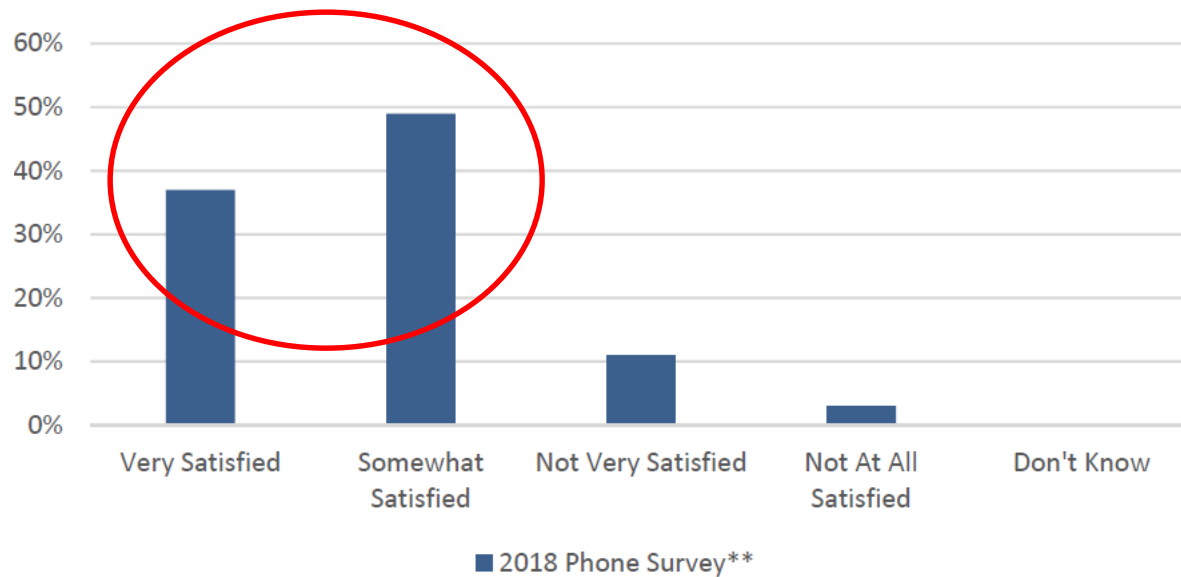


### Rating Satisfaction with Recreation Facilities and Programs

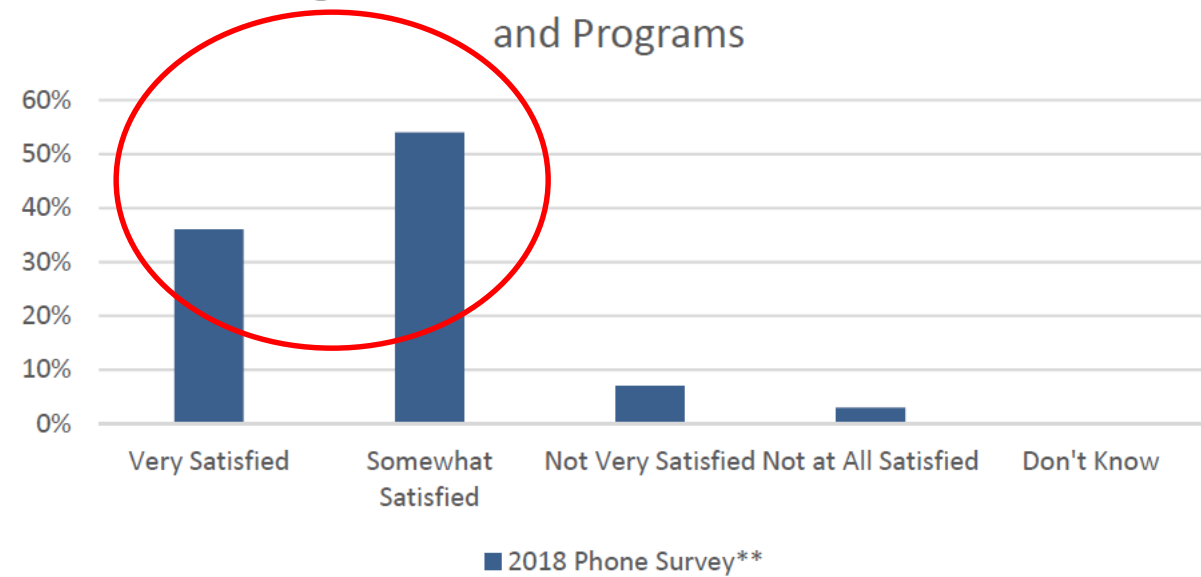


# COMMUNITY OUTREACH TELEPHONE SURVEY

### Rating Recreation Facilities Maintenance



### Rating Satisfaction with Recreation Facilities and Programs





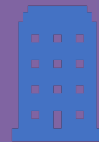
# NEEDS ANALYSIS



How many Organized Sports Fields are Needed?



Are Neighborhood Parks Conveniently and Appropriately Distributed throughout the City?



What are the top priority facility needs for Riverside?



# NEEDS ANALYSIS

## HOW MANY ORGANIZED SPORTS FIELDS ARE NEEDED?



Needs Analysis Considering Demand from All Sports Organization Players Using Riverside Facilities

Facility		Facility Need Ratio - City of Riverside	2018 Needs	Existing City Facilities	Surplus / Deficit (-)	School Facilities Available	Other Facilities Available*	Total Facilities Available	Total Surplus/ Deficit(-)
Soccer	Organized Adult	1/ 23402 pop.	13.9	13.5	-0.4	13	10	36.5	22.6
	Organized Youth	1/ 17646 pop.	18.5	2.5	-16.0	41	12	55.5	37.0
Football	Organized Adult	1/ 66762 pop.	4.9	4	-0.9	9	0	13	8.1
Baseball	Organized Adult	1/ 28957 pop.	11.3	8.5	-2.8	14	0	22.5	11.2
	Organized Youth	1/ 17842 pop.	18.3	18	-0.3	3	1	22	3.7
Softball	Organized Adult	1/ 9417 pop.	34.6	17.5	-17.1	13	1	31.5	-3.1
	Organized Youth	1/ 53021 pop.	6.1	1	-5.1	0	0	1	-5.1
Rugby		1/ 72413 pop.	4.5	0.5	-4.0	0	0	0.5	-4.0
Swimming (Competition)		1/ 339438 pop.	1.0	2	1.0	11	0	13	12.0

Sport Assessed	These numbers are based on participation rates by the local		These numbers are existing facilities compared to populations of communities that are submitting data. These are not demand numbers but only an average of what people have not what they need.			
	Local Demand Calculation		NRPA Existing Facility Benchmark 1		NRPA Existing Facility Benchmark 2	
	Riverside Local Demand (1 per x population)	Demand	National Standard from 2018 NRPA Report (1 per x population) data based on "all agencies column"	Demand	National Standard from 2018 NRPA Report (1 per x population) data based on "more than 2,500" (riverside has a population density of 4,000 / square mile)	Demand
<b>Soccer</b>						
Large Regulation	23402	13.9	11383	28.6	15746	20.7
Small Regulation	17646	18.5	6039	54.0	8773	37.1
<b>Football</b>						
Large Regulation	66762	4.9	24742	13.2	35453	9.2
<b>Baseball</b>						
Large Regulation	28957	11.3	18880	17.3	25179	12.9
Small Regulation	17842	18.3	6519	50.0	7770	41.9
<b>Softball</b>						
Large Regulation	9417	34.6	12000	27.2	14725	22.1
Small Regulation	53021	6.1	9900	32.9	12121	26.9
<b>Rugby</b>						
Large Regulation	72413	4.5	24060	13.5	29924	10.9
<b>Swimming (Competition)</b>						
	1 pool		NRPA does not classify weather this is competitive or not, thus a per capita analysis should be used		NA	

Sport Assessed	These numbers are based on participation rates by the local		These numbers are existing facilities compared to populations of communities that are submitting data. These are not demand numbers but only an average of what people have not what they need.			
	Local Demand Calculation		NRPA Existing Facility Benchmark 1		NRPA Existing Facility Benchmark 2	
	Riverside Local Demand (1 per x population)	Demand	National Standard from 2018 NRPA Report (1 per x population) data based on "all agencies column"	Demand	National Standard from 2018 NRPA Report (1 per x population) data based on "more than 2,500" (riverside has a population density of 4,000 / square mile)	Demand
Soccer						
Large Regulation	23402	13.9	11383	28.6	15746	20.7
Small Regulation	17646	18.5	6039	54.0	8773	37.1

1 Large Soccer Field (w/ lights) = \$300,000

Local Riverside Need                      14 Fields = \$4.2M

National Standard Equivalent              21 Fields = \$6.3M

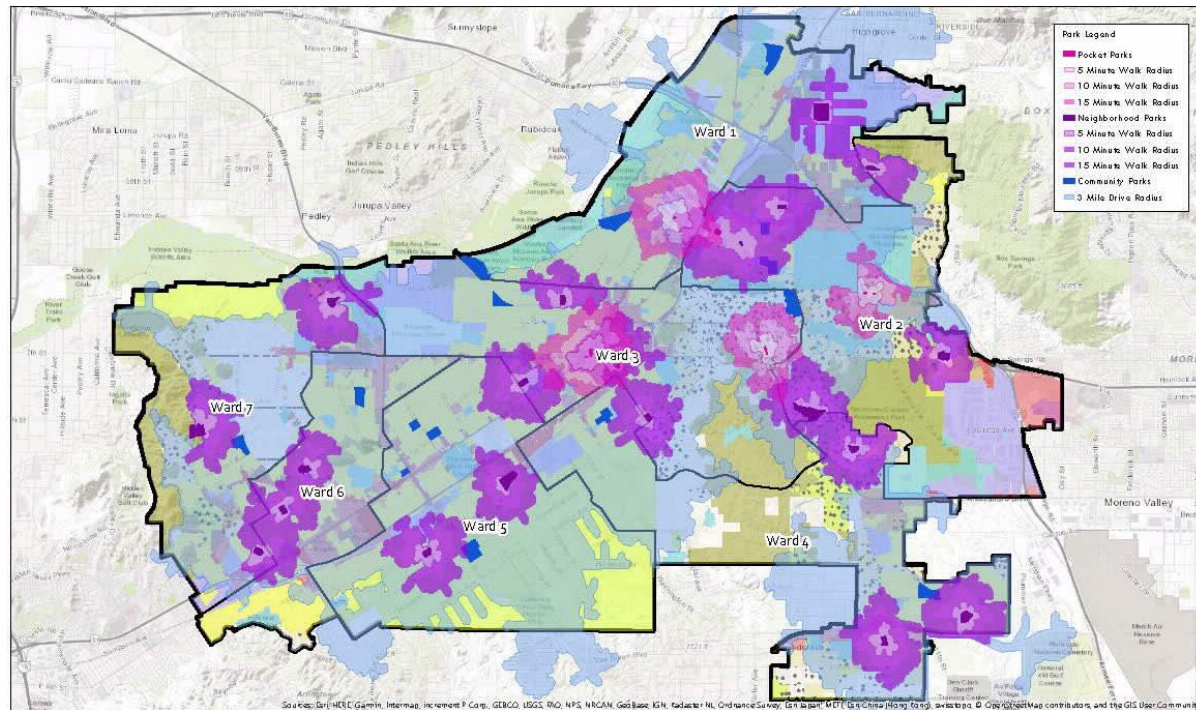
**\$2.1 M** in expenses over demand

Needs Analysis Considering Demand from All Sports Organization Players Using Riverside Facilities

Facility	Facility Need Ratio - City of Riverside			2018 Needs	Existing City Facilities	Surplus / Deficit (-)	School Facilities Available**	Other Facilities Available*	Total Facilities Available	Total Surplus/ Deficit(-)
Soccer	Organized Adult	1/ 23402	pop.	13.9	13.5	-0.4	6.5	10	30	16.1
	Organized Youth	1/ 17646	pop.	18.5	2.5	-16.0	20.5	12	35	16.5
Football	Organized Adult	1/ 66762	pop.	4.9	4	-0.9	4.5	0	8.5	3.6
Baseball	Organized Adult	1/ 28957	pop.	11.3	8.5	-2.8	7	0	15.5	4.2
	Organized Youth	1/ 17842	pop.	18.3	18	-0.3	0.15	1	19.15	0.9
Softball	Organized Adult	1/ 9417	pop.	34.6	17.5	-17.1	6.5	1	25	-9.6
	Organized Youth	1/ 53021	pop.	6.1	1	-5.1	0	0	1	-5.1
Rugby		1/ 72413	pop.	4.5	0.5	-4.0	0	0	0.5	-4.0
Swimming (Competition)		1/ 339438	pop.	1.0	2	1.0	5.5	0	7.5	6.5



# NEEDS ANALYSIS: SERVICE ANALYSIS



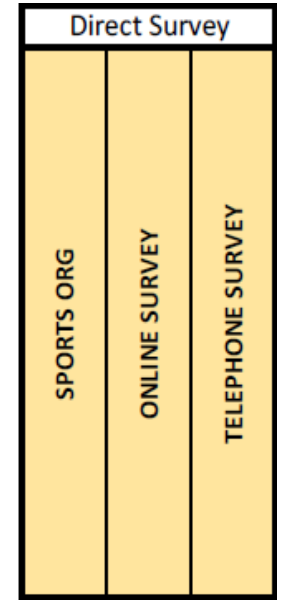
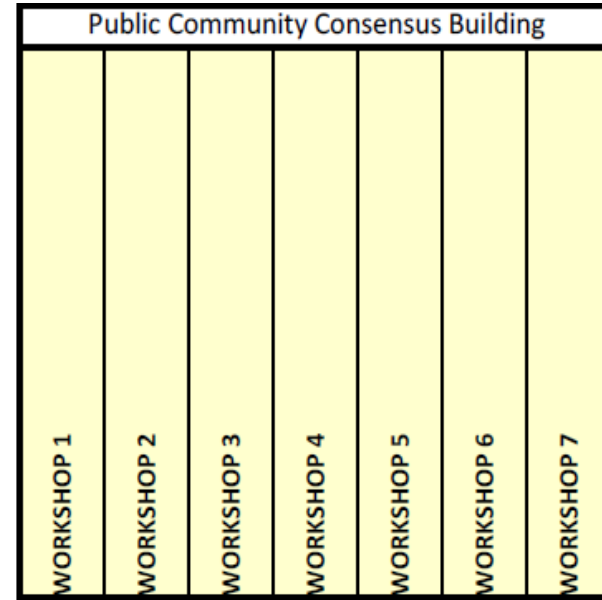
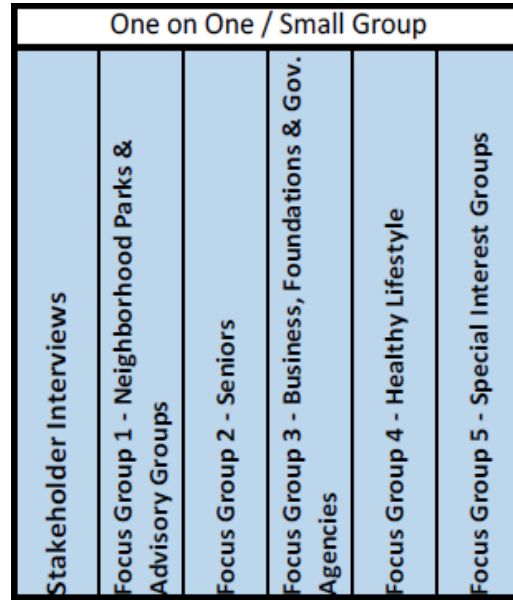
Service Gap Analysis - Pocket Parks / Neighborhood Parks (5, 10, 15 Minute Walk Radius) & Community Parks (3 Mile Drive radius)

- 5 minute walk – 15,924 (5.0%) population
- 10 minute walk – 39,318 (12.0%) population
- 15 minute walk – 66,621 (20.0%) population
- Residents adjacent to Community Parks (measured in a 3 mile radius due to the automobile-centric design and programming) is an estimated 320,746 (98%)
- 8.36 ac. / 1000 population (developed and undeveloped)

# NEEDS ANALYSIS

## WHAT ARE THE TOP PRIORITY FACILITY NEEDS FOR RIVERSIDE?

FACILITIES	Stakeholder Interviews	Focus Group 1 - Neighborhood Parks & Advisory Groups	Focus Group 2 - Seniors	Focus Group 3 - Business, Foundations & Gov. Agencies	Focus Group 4 - Healthy Lifestyle	Focus Group 5 - Special Interest Groups
Aquatic Center; Indoor Pool; Pool / Aquatic Facility (West of Arlington); Swimming Pool	.	.	.	.	.	.
Baseball Fields; Baseball Diamonds; Baseball Field #1 at Bonaminio; Baseball Field (third field at Hunter Hobby)	.	.	.	.	.	.
BMX / Skate Park	.	.	.	.	.	.
Carousal / Ferris Wheel (Fairmount Park)	.	.	.	.	.	.
Community Center (at all parks)	.	.	.	.	.	.
Community Garden (Patterson Park)	.	.	.	.	.	.
Cross Country Facility	.	.	.	.	.	.
Dog Park	.	.	.	.	.	.
Exercise Course	.	.	.	.	.	.
Football Fields; Flag Football Tournament Location; Football Stadium	.	.	.	.	.	.
Golf Course (18 hole)	.	.	.	.	.	.
Gym / Recreation Center; Basketball Courts (Arena / Indoors)	.	.	.	.	.	.
Heated Pool; Ramp / Stairs to enter pools	.	.	.	.	.	.
Homeless Facility / Center	.	.	.	.	.	.
Lacrosse	.	.	.	.	.	.
Library (Bobby Bonds Park)	.	.	.	.	.	.
Lighting in Parks	.	.	.	.	.	.
Multi-Purpose Fields	.	.	.	.	.	.
Open Space / Natural Areas / Greenbelts	.	.	.	.	.	.
Outdoor Performance Venue / Amphitheater / Arena	.	.	.	.	.	.
Parking	.	.	.	.	.	.
Parks/Mt. Rubidoux	.	.	.	.	.	.
Pickleball Courts w/Lights	.	.	.	.	.	.
Pocket Parks / Linear Parks	.	.	.	.	.	.
Restrooms	.	.	.	.	.	.
Rugby Field	.	.	.	.	.	.
Santa Ana River Trail	.	.	.	.	.	.
Scoreboards for all Fields; Sport Field Fencing	.	.	.	.	.	.
Senior Facility / Center	.	.	.	.	.	.
Shade Structures	.	.	.	.	.	.
Soccer Fields; Youth Soccer Fields (U-5, U-7)	.	.	.	.	.	.
Softball Fields	.	.	.	.	.	.
Splash Pad / Water Play	.	.	.	.	.	.
Sports Complex / Sports Park; Baseball Parks with multiple fields; Smaller Kids Sports Fields	.	.	.	.	.	.
Trails / Trail System / Trail Heads/Access / Walking / Jogging	.	.	.	.	.	.
Youth Opportunity Center	.	.	.	.	.	.
Zipline	.	.	.	.	.	.



# RECOMMENDATIONS



Parks Maintenance  
Recommendations



Park Facility Recommendations



Program Recommendations



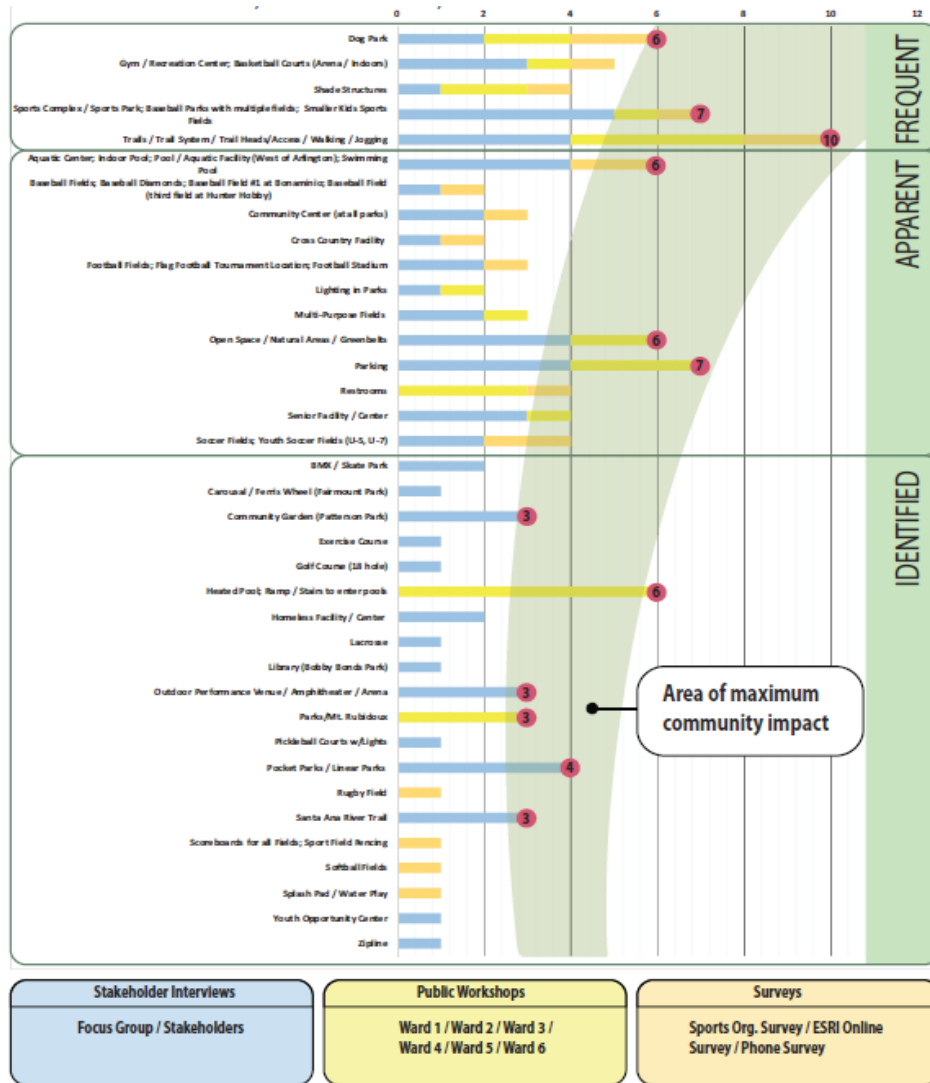
General Plan Policy  
Recommendations

# RECOMMENDATIONS : MAINTENANCE



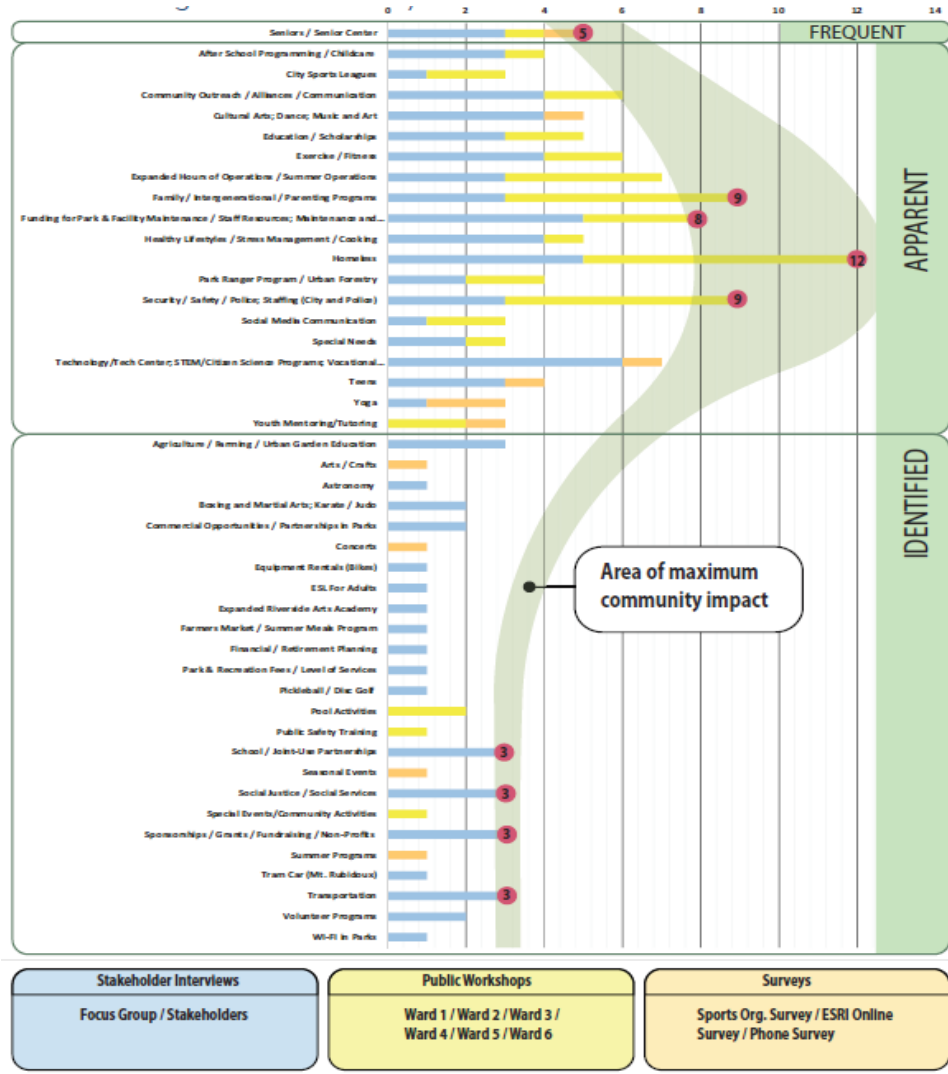


# RECOMMENDATIONS : FACILITY



- Amphitheater
- Dog Park
- Community Garden
- Gym / Recreation Center
- Heated Pool
- Mt. Rubidoux
- New Aquatic Facility /Pool (West of Arlington)
- Open Space
- Parking
- Pocket Parks / Linear Parks
- Santa Ana River Trail
- Shade Structures
- Sports Complex
- Trails

# RECOMMENDATIONS : PROGRAM



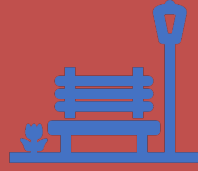
- Family / Intergenerational / Parenting Programs
- Funding for Parks and Facility Maintenance
- Homeless
- Schools / Grants / Fundraising / Non-Profits
- Seniors / Senior Center
- Security / Safety / Police
- Social Justice / Social Services
- Sponsorships / Grants / Fundraising
- Transportation

# RECOMMENDATIONS



- General Plan Policy Recommendations
  - General Plan—Parks and Recreation Element
  - General Plan—Land Use and Urban Design Element
  - General Plan—Public Facilities and Infrastructure Element
  - General Plan—Open Space and Conservation Element

# FUNDING AND IMPLEMENTATION



Funding Sources for Parks and Recreation



Current and Projected Capital Project Costs

# FUNDING SOURCES FOR PARKS AND RECREATION



# CURRENT AND PROJECTED CAPITAL PROJECT COSTS



- **\$158,331,198** in park specific renovations to developed parkland
  - **\$74,550,970** in existing facility improvements
  - **\$75,044,228** in anticipated ADA improvements
  - **\$8,736,000** in citywide projects

# RECOMMENDATION

That the Park and Recreation Commission receive and update on the Park Master Plan project and provide feedback as appropriate.